



"Many design decisions were driven by the school's desire to create opportunities for students to gather."

Susan Williamson, Texas Architect 1/2 2007



WWW.AECOLLAB.COM

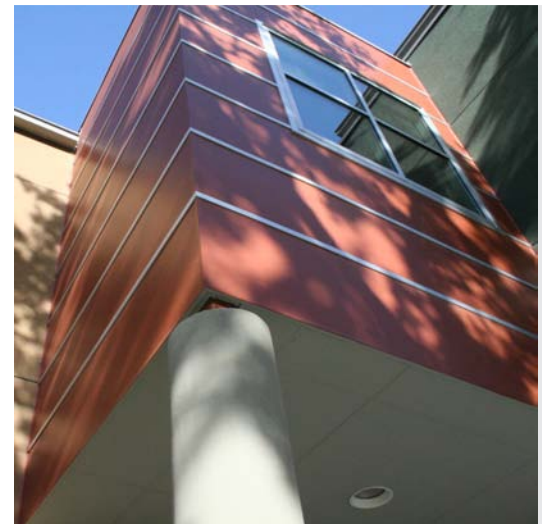
LOCATION Austin, TX

AREA 28,000 sf

COST \$3,500,000

ARCHITECT Susman Tisdale Gayle

Intelligible forms and simple materials, including structural steel, limestone, stucco, Hardi-panel, and metal roofing, are woven into a lively mix of colors and shapes to appropriately fuel the imaginations of middle school students at St. Andrew's Episcopal School. Early collaboration and careful coordination between architects, engineers, and general contractor allowed the School to add this much needed new classroom and administration building to its compact Central Austin campus, while satisfying strict budget constraints and meeting an aggressive construction schedule.



education

St. Andrew's Middle School