

The building is named for Head of School, Lucy Nazro, who has influenced the character of St. Andrew's Episcopal School and its students for more than 25 years.

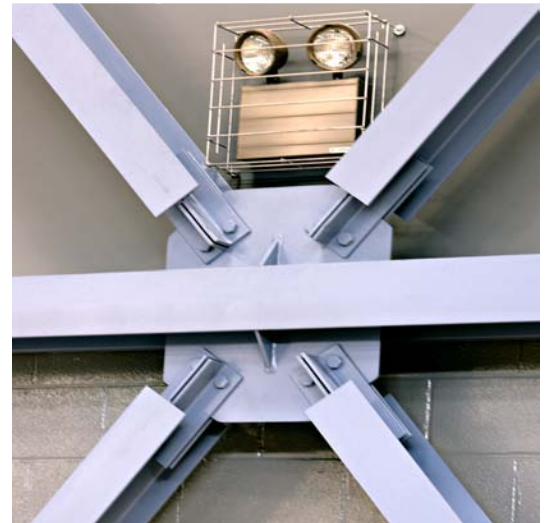


WWW.AECOLLAB.COM

LOCATION Austin, TX
AREA 18,000 sf
COST \$3,900,000

ARCHITECT Susman Tisdale Gayle

The exposed steel structure of the gymnasium is a clear and simple expression of the form of the building. The curved roof follows the top chord of the trusses and the perpendicular roof beams. The truss bottom chords and bracing beams lie in a horizontal plane 25 feet above the court floor. Steel connections are clearly detailed to express the load paths of forces and logic of force transfer.



edificar

St. Andrew's Episcopal School - Nazro Hall